



3006 sq Ft. Glacier Point at Tehaleh lot 1513

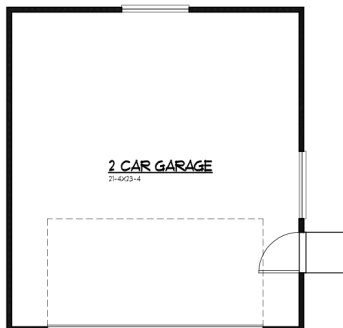
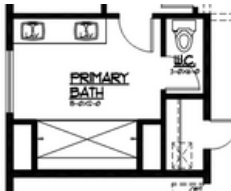
4 Bedrooms including Guest | Office/Flex | Prep Kitchen | 2.75 Baths | Covered Outdoor Living | 3 Car Garage



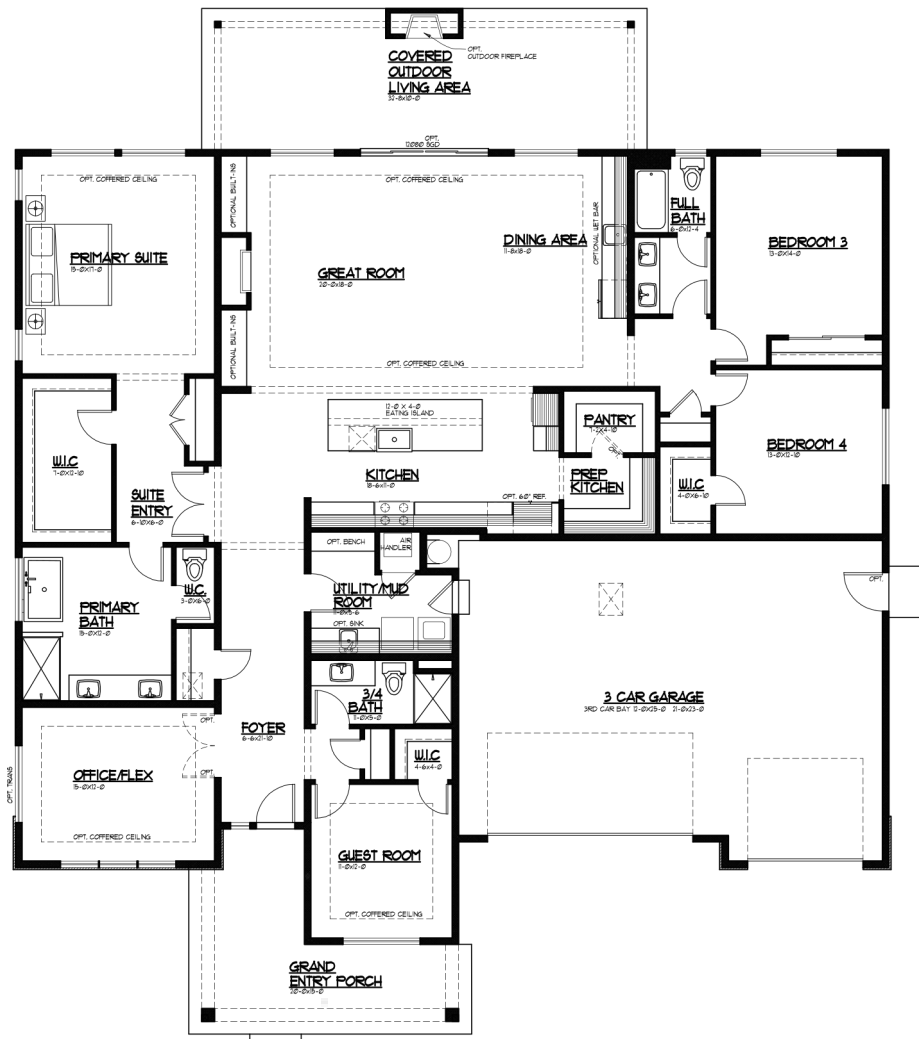
Elevation A
Modern Farmhouse

Rambler

Primary Bath Shower
Option



Detached Garage Included



JK MONARCH
FINE HOMES

JK Monarch seeks to constantly improve our homes, and to that end we reserve the right to change features, brand names, dimensions, architectural details, and designs. This document is for illustrative purposes and drawings are not to scale. Finishes, styles, and amenities shown may not be included, even under signed contract.

Mailing Address. P.O. Box 188 . Puyallup, Washington 98371 | phone. 253.840.5660

JKMONARCH.COM



Last Updated 1/22/2026