



3272 Sq Ft.

Firdrona lot 13

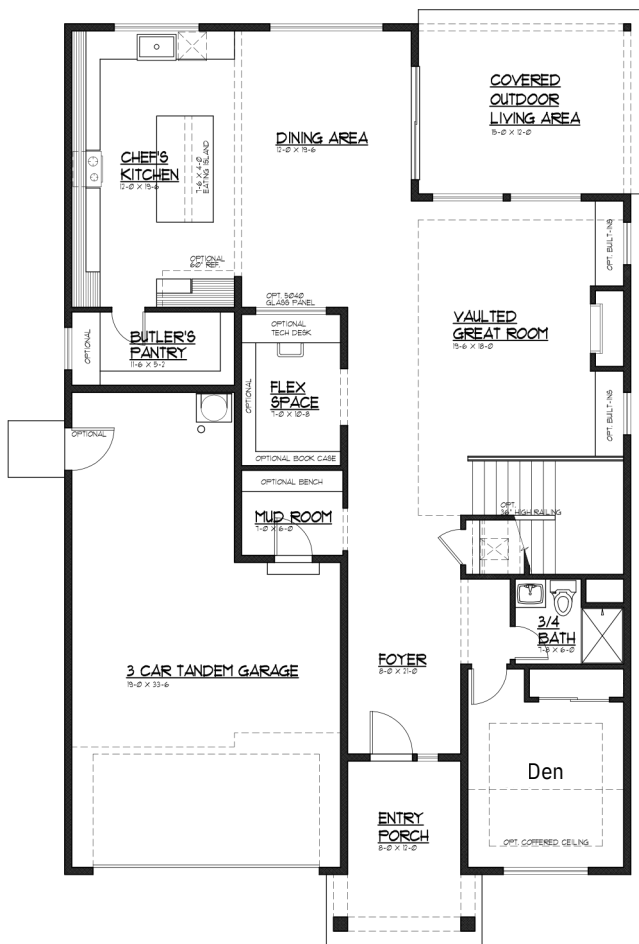
3 Bedrooms | Den | Flex Space | Bonus Room | 2.75 Baths | Covered Outdoor Living | 3 Car Tandem Garage



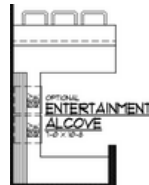
Elevation C  
Craftsman

1ST FLOOR

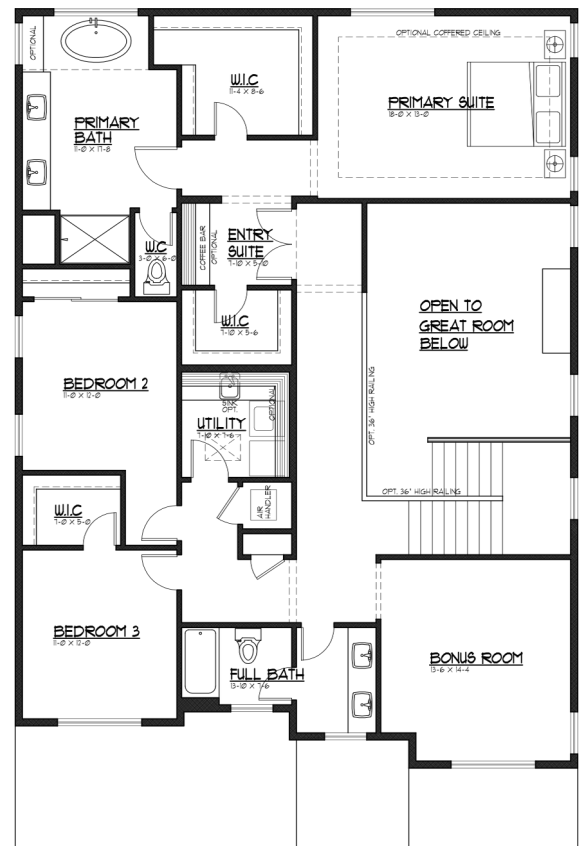
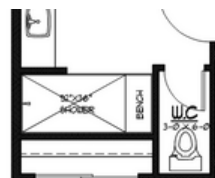
2ND FLOOR



Flex Space Option



Primary Bath Shower Option



**JK MONARCH**  
FINE HOMES

JK Monarch seeks to constantly improve our homes, and to that end we reserve the right to change features, brand names, dimensions, architectural details, and designs. This document is for illustrative purposes and drawings are not to scale. Finishes, styles, and amenities shown may not be included, even under signed contract.

Mailing Address. P.O. Box 188 . Puyallup, Washington 98371 | phone. 253.840.5660

JKMONARCH.COM



Last Updated 12/22/2025