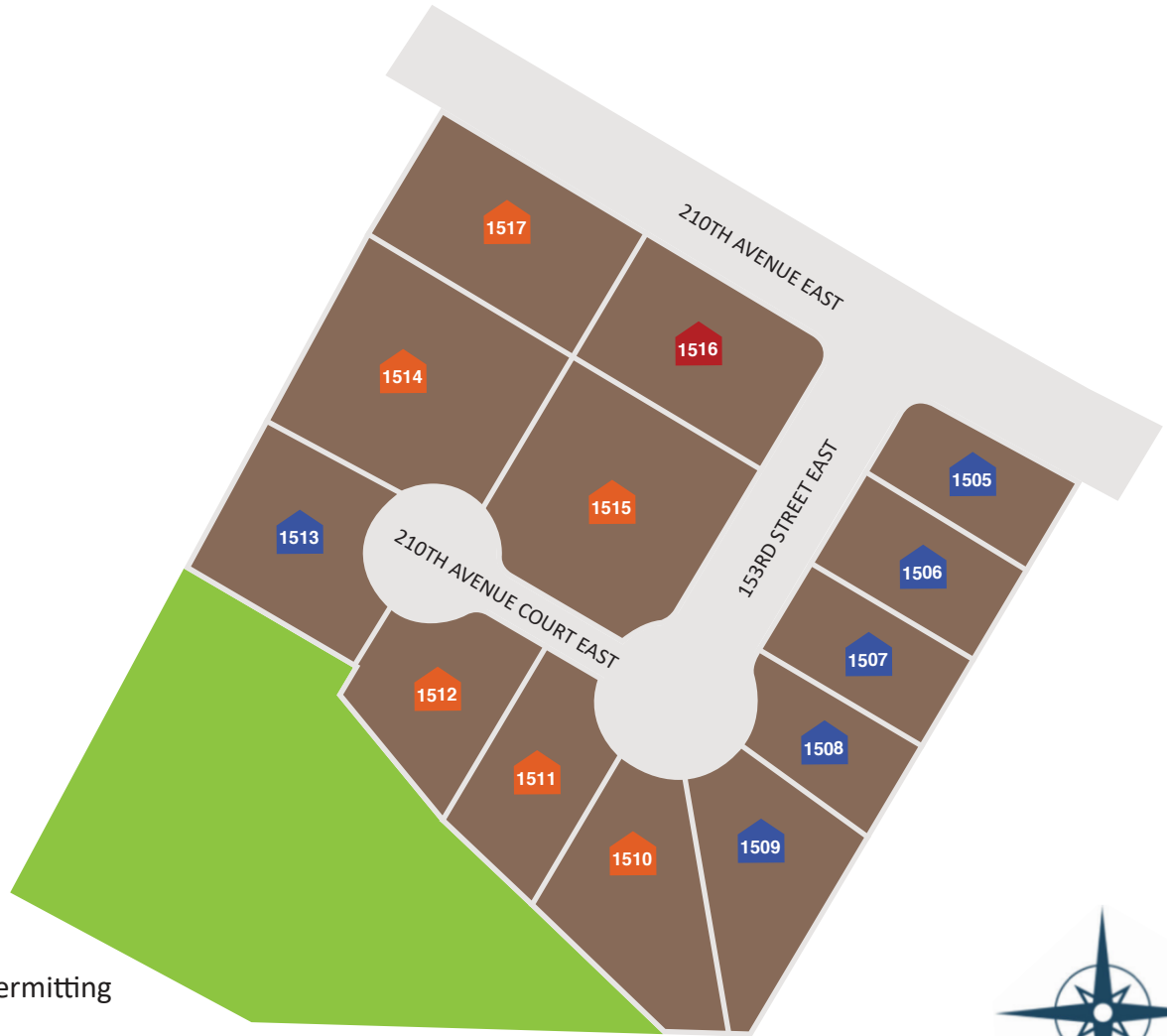




**JK MONARCH**  
A TRUMARK COMPANY

COMMUNITY PLAT MAP – GLACIER POINTE



-  Available Under Construction / Permitting
-  Available Homes
-  Sold Homes
-  Model Home
-  Future Release
-  Move In Ready

**Glacier Pointe Address: 21005 153rd Street East Bonney Lake, WA 98391**

Document last updated: **May 15th, 2026**

Open Hours - By Appointment  
 Gary Hendrickson 253-499-8449  
 Email: [concierge@gh1team.com](mailto:concierge@gh1team.com)



JK Monarch seeks to constantly improve our homes, and to that end we reserve the right to change features, brand names, dimensions, architectural details, and designs. This document is for illustrative purposes and drawings are not to scale. Finishes, styles, and amenities shown may not be included, even under signed contract.