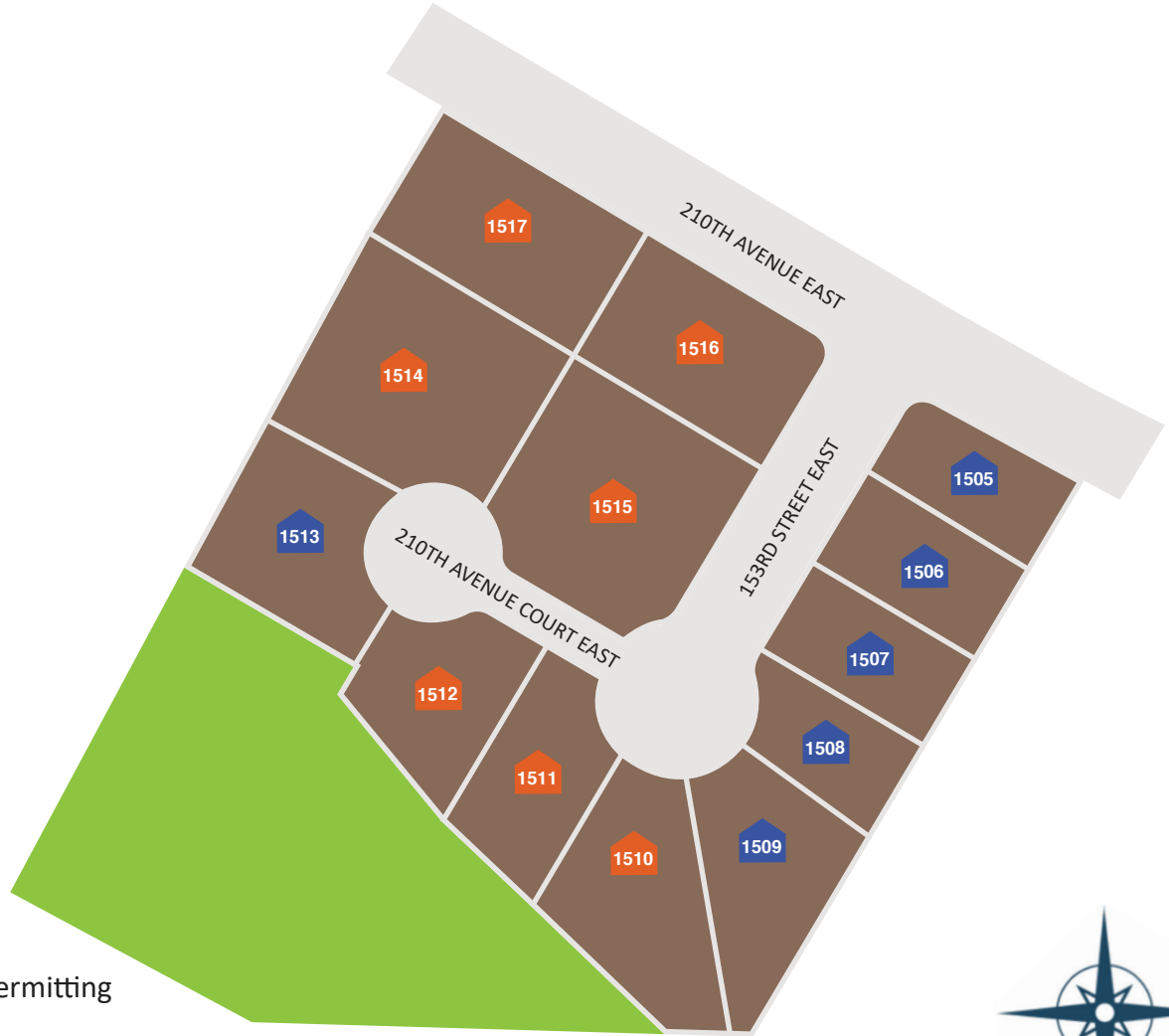




**JK MONARCH**  
A TRUMARK COMPANY

COMMUNITY PLAT MAP – GLACIER POINT



- Available Under Construction / Permitting
- Available Homes
- Sold Homes
- Model Home
- Future Release
- Move In Ready

**Glacier Point Address: 21005 153rd Street East Bonney Lake, WA 98391**

Document last updated: **December 16th, 2025**

Open Hours - By Appointment

Gary Hendrickson 253-499-8449  
Email: [concierge@gh1team.com](mailto:concierge@gh1team.com)



JK Monarch seeks to constantly improve our homes, and to that end we reserve the right to change features, brand names, dimensions, architectural details, and designs. This document is for illustrative purposes and drawings are not to scale. Finishes, styles, and amenities shown may not be included, even under signed contract.

