



2872 Sq Ft. Liberty Park 21

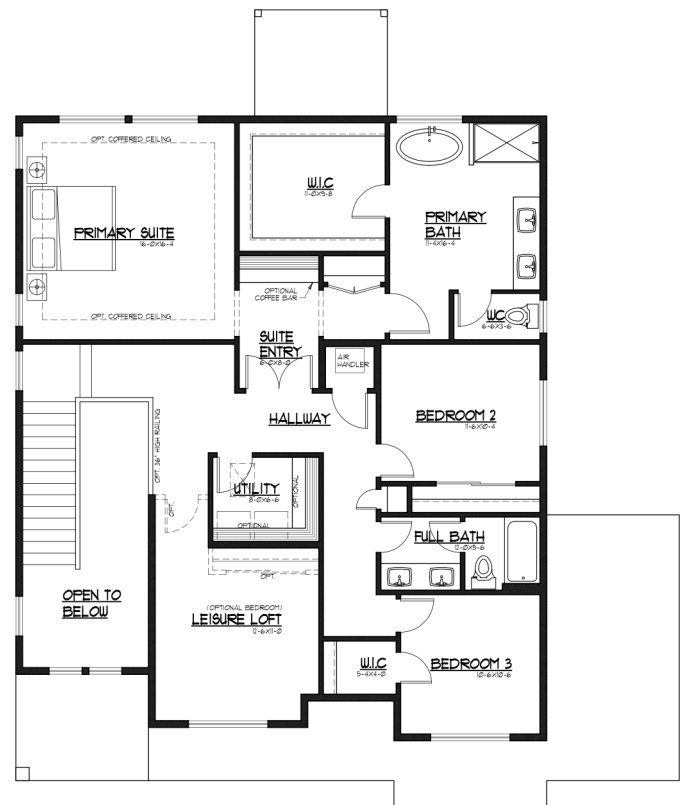
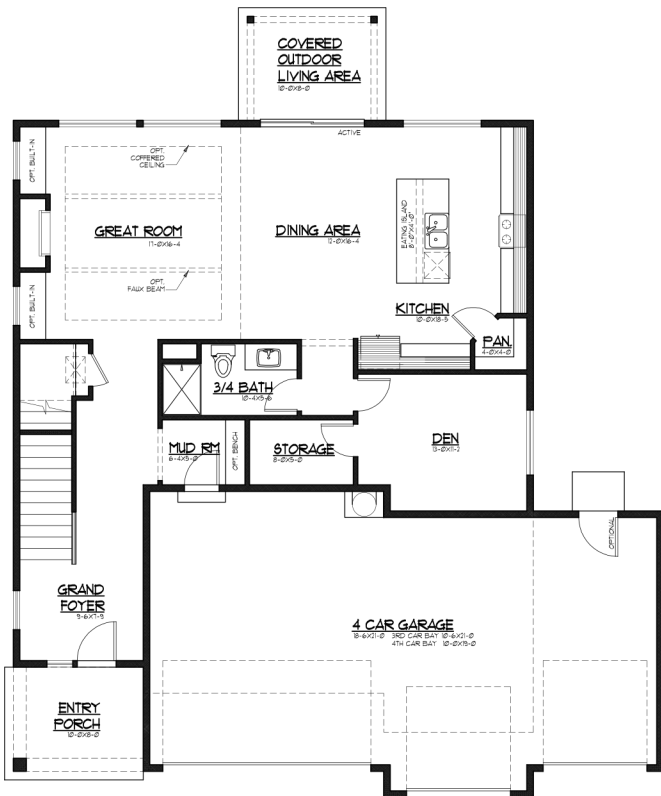
3 Bedrooms | Den | Leisure Loft | 2.75 Baths | Covered Outdoor Living | 4 Car Garage



Elevation C Craftsman

1ST FLOOR

2ND FLOOR



JK MONARCH
FINE HOMES

JK Monarch seeks to constantly improve our homes, and to that end we reserve the right to change features, brand names, dimensions, architectural details, and designs. This document is for illustrative purposes and drawings are not to scale. Finishes, styles, and amenities shown may not be included, even under signed contract.

Mailing Address. P.O. Box 188 . Puyallup, Washington 98371 | phone. 253.840.5660

JKMONARCH.COM



Last Updated 04/04/2025