

COMMUNITY FLOORPLANS



THE CHESTER

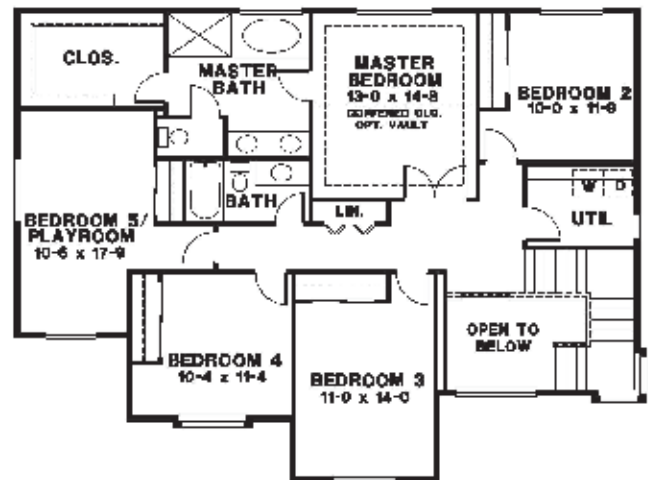
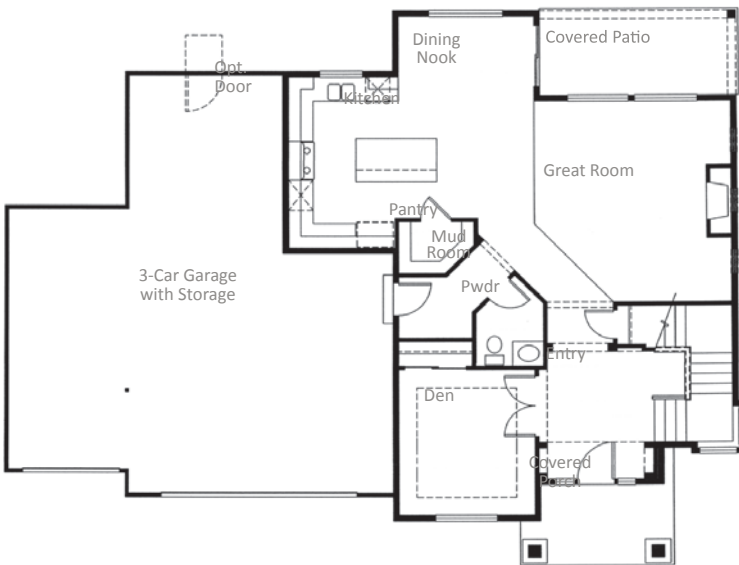
SIZE	FEATURES
2604 sf.	5 Bedrooms / 2.5 Baths / 3 Car Garage

The Chester plan features a contemporary architectural style with a spacious main living area, great for gatherings and everyday living. The main level has a covered porch opening to a two-story entry and a great-room style living, dining and kitchen with huge work island and walk-in pantry. The upper level has a spacious master suite with five-piece bath, three additional bedrooms and an optional fifth bedroom or bonus room.



MAIN LEVEL FLOOR PLAN

UPPER LEVEL FLOOR PLAN



JK MONARCH
FINE HOMES

Note: Continuing a policy for constant improvement, builder reserves the right to change features, brand names, dimensions, architectural details and designs. This brochure is for illustrative purposes and drawings are not to scale. This is not part of a legal contract. Prices are subject to change without notice.

JKMONARCH.COM

Mailing Address: P.O. Box 188 . Puyallup, Washington 98371 | phone. 253.840.5660

