

2,205 Square Feet

A V A I L A B L E E L E V A T I O N



Belmar
TRADITIONAL



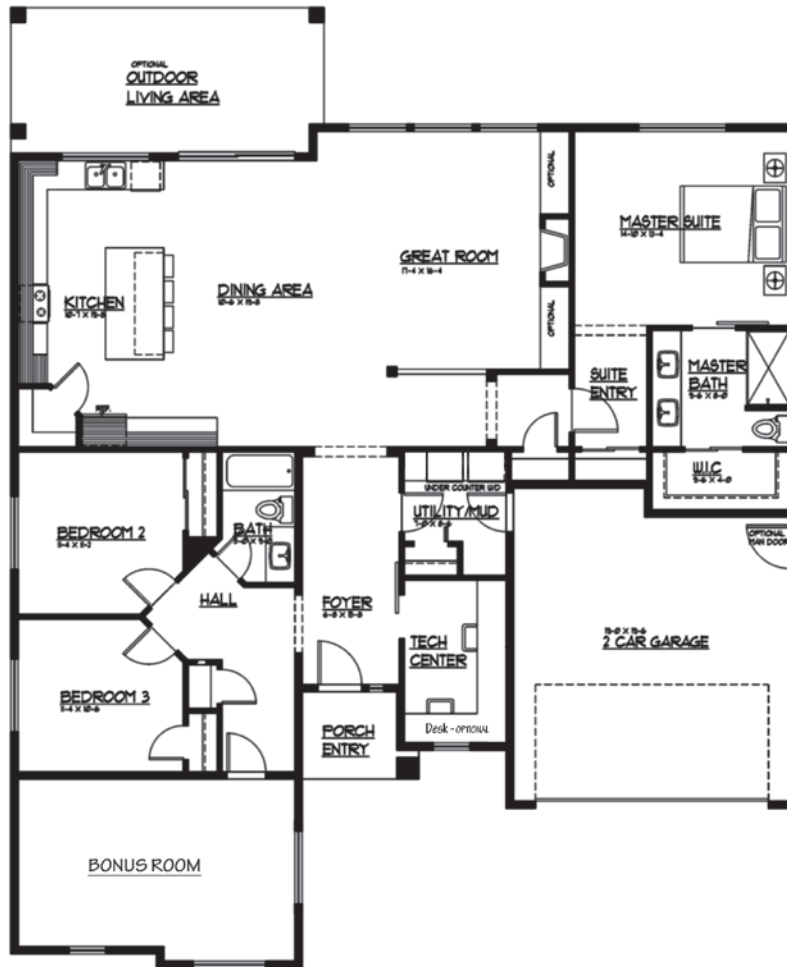
Mt Baker
NORTHWEST



Sterling
CONTEMPORARY

3 Bedrooms, 2 Baths, 2 Car Garage

MAIN LEVEL FLOOR PLAN



JK MONARCH
FINE HOMES

Note: Continuing a policy for constant improvement, builder reserves the right to change features, brand names, dimensions, architectural details and designs. This brochure is for illustrative purposes and drawings are not to scale. This is not part of a legal contract. Prices are subject to change without notice.

JKMONARCH.COM

Mailing Address: P.O. Box 188 . Puyallup, Washington 98371 | phone: 253.840.5660



JK MONARCH
FINE HOMES